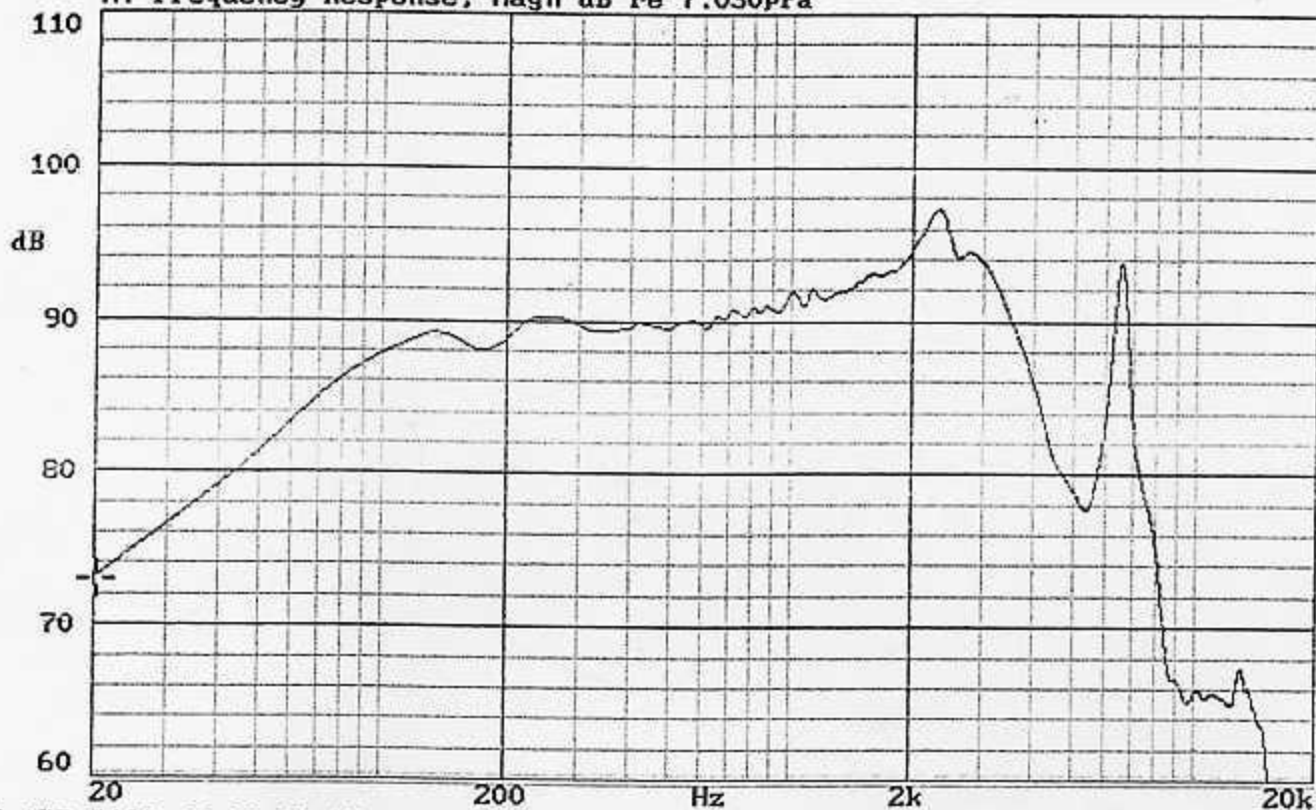


X:20.000Hz Y:73.08dB ZA:Live Curve TSR fund.

A: Frequency Response, Magn dB re 7.030 μ Pa



25-APR-2000 08:03:58 AM

Mode: TSR 908Ti REV. "H"



ENG STD

G.W. 04/25/00

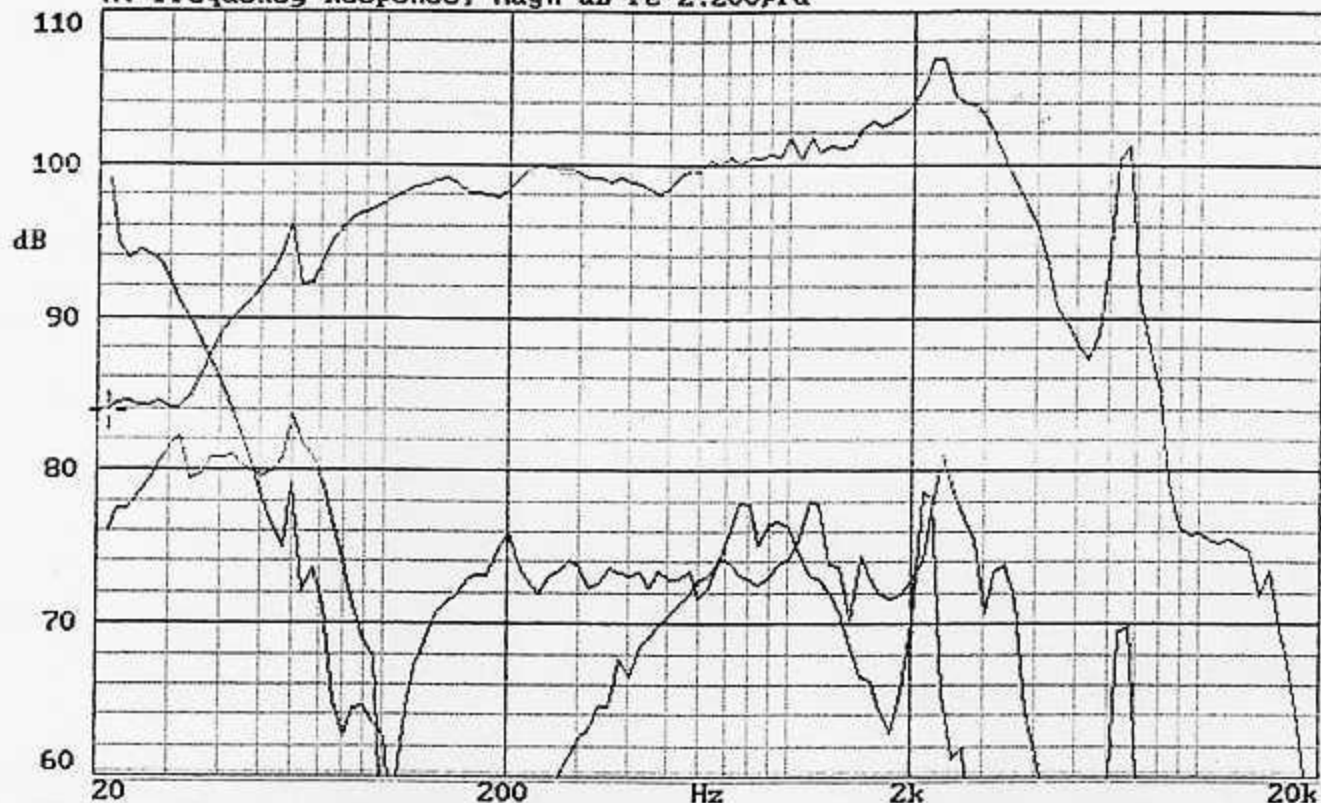
X:21.135Hz

*Y:83.90dB

ZA:1.0000

SSR fund.

A: Frequency Response, Magn dB re 2.200 μ Pa



25-APR-2000 08:16:26 AM

Mode: 2&3 HARM 908 TI, REV. "H", @ 9.0V.
DISTORTION RAISED 20dB



MLSSA SPO 3.0 #940711-2321-2322 for Harmon International

Measured Data

QC Limits

Line	Parameter	Value	Units
1	RMSE-free	0.26	Ohms
2	Fs	44.45	Hz
3	Re	5.12	Ohms
4	Res	184.76	Ohms
5	Qms	13.71	
6	Qes	0.38	
7	Qts	0.37	
8	L1	0.53	mH
9	L2	0.60	mH
10	R2	2.08	Ohms
11	RMSE-load	0.25	Ohms
12	Vas (Sd)	22.05	liters
13	Mms	33.01	grams
14	Cms	388	IM/Newton
15	B1	11.15	Tesla-M
16	SPLref (Sd)	88.9	dB
17	Rub-index	0.00	

Method: Mass-loaded (30.32 grams)

Area (Sd): 201.06 sq cm

DCR mode: Fixed (5.18 - 0.06 ohms)

QC file: CLOSED

Analysis successful. Shift in Fs = -28.7% (-20% to -50% is recommended).